



Division of Erectoweld, Inc.

1444 S. West Ave., Waukesha, WI 53189
 Tel: 262-547-0211 Fax: 262-547-0718
 weedharvesters@aol.com

586 Third Line, Oakville, ON L7L 4A7 Canada
 Tel: 905-825-1371 Fax: 905-825-4116
www.aquamarine.ca info@aquamarine.ca

7385 Baldwin Rd., Cayuga, NY 13034
 Tel: 315-253-4270 Fax: 315-253-9277
 Weedharvesters.com
 hclasen@weedharvesters.com

AQS-700 AQUATIC SKIMMER
Technical Specifications

DIMENSIONS & WEIGHT*

Length Overall (A)	51'-0"	15550 mm
Length Shipping	49'-0"	14940mm
Height Overall (C) w/ cab	13'-4"	4101 mm
Width Overall (B)	13'-11"	4240 mm
Width Shipping	13'-11"	4240 mm
Shipping Height	11'-0"	3350 mm
Weight, without options	25,000 lbs	11360 kg

CARRYING CAPACITY

Maximum Volume	700 cu ft	20 cu m
Maximum Weight (@ 40% Freeboard)	10,000 lbs	4450 kg

FLOTATION

Hull type (44)	Catamaran, rect. Pontoons c/w insp. & drain holes	
Pontoon Length (D)	36'-0"	10670 mm
Pontoon Depth (F)	4'-0"	1220 mm
Compartments	Eight (8), 6 Watertight	
Draft, Light (Avg)	21"	535 mm
Draft, Loaded (Avg)	20"	740 mm
Bottom Protection	Two (2) Heavy Duty Steel tubes	

POWER SYSTEM & CONTROL BRIDGE

Engine	Two (2) 4 cyl., water-cooled Turbo diesel, 87.4 HP/54.5 kW @ 2800 rpm	
Hydraulic Pump	Tandem hydrostatic transmission & PC pump	
Hydraulic Tanks (2)	50 US gal	190 liter
Fuel Tanks (2)	50 US gal	190 liter
Operator's Seat	Adjustable	
Hydraulic Control	Manual levers & switches	
Control Panel	Full instrumentation	
Electrical System	12 volt, D.C.	

OPTIONAL EQUIPMENT

Spare Parts Package	Spud Anchors	Heavy Duty Stainless Steel Flat Wire Mesh Belting
Tool Kit & Tool Box	Anchor & Line	Low Profile Open-side Cabin
Marine Lights & Horn	Life Buoy & Line	Stainless Steel Structure, full or partial
Work & Revolving Light	Cleated Belting	Sun/Rain Canopy

COLLECTING HEAD

Collect. Swath, hyd. Adj. (G)	To 14'-0"	4270 mm
Collecting Depth, empty (H)	20"	410 mm
Belting	HD galvanized steel	
Conveyor Speed, adjustable	To 70'/min.	20 m/min.
Head Side Wings	Opening hydraulically adjustable	

STORAGE & UNLOADING SYSTEM

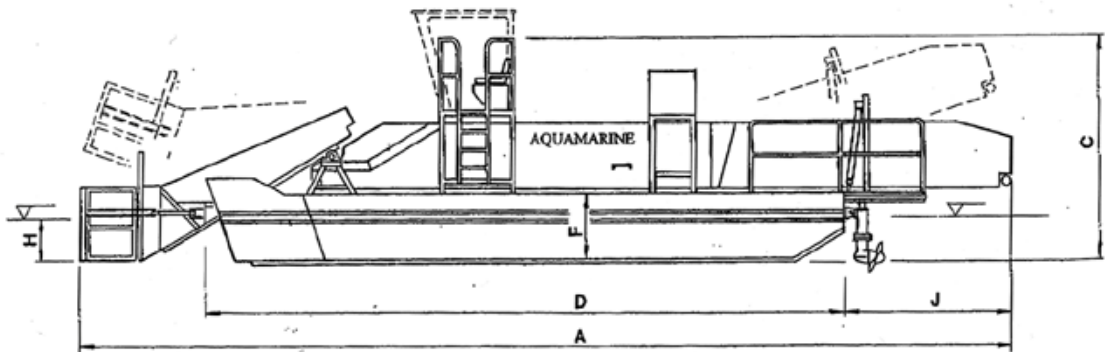
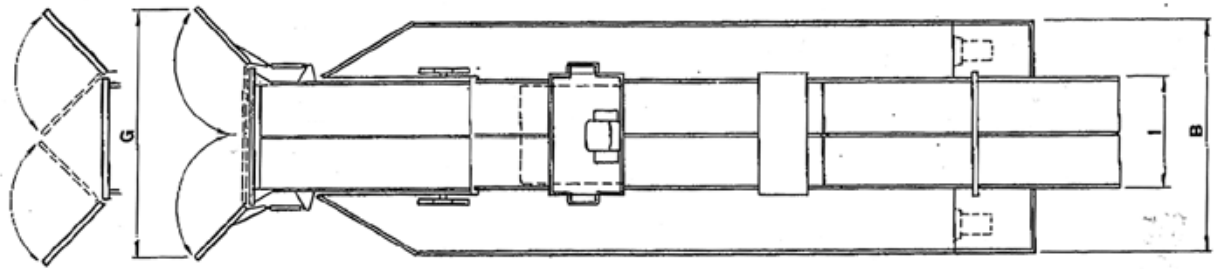
Type, Two (2) Stage	Stationary & unloading c/w hyd. Lift & sold plastic floor under conveyor top belting	
Conveyor Width (I)	6'-2"	1880 mm
Conveyor Overhang (J)	8'-0"	2440 mm
Unloading Height	Hydraulically adjustable	
Unloading Time	2 minutes average	
Conveyor Speed	Hydraulically adjustable	
Belting	Heavy Duty Galvanized	

PROPULSION

Type	Tandem (2) hydraulic stern drives	
Propeller type	Multi-blade marine prop or Archimedes Screw auger	
Vessel travel speed	6 knots/11 km/h	

GENERAL

Fasteners	Stainless steel & high strength steel where required	
Hydraulic Tubing	Stainless steel	
Fire Extinguisher	One (1)	
Conveyor Belt Tracks	UHMW-lined throughout	
Anti-Corrosion System	High impact, high visibility safety orange, thermally cured epoxy coating	



AQUAMARINE AQS-700 AQUATIC SKIMMER